



Habitat Conservation Strategies: A Tool for Planning

Margo Morrison

Manager, Conservation Science

Nature Conservancy of Canada – Atlantic Region

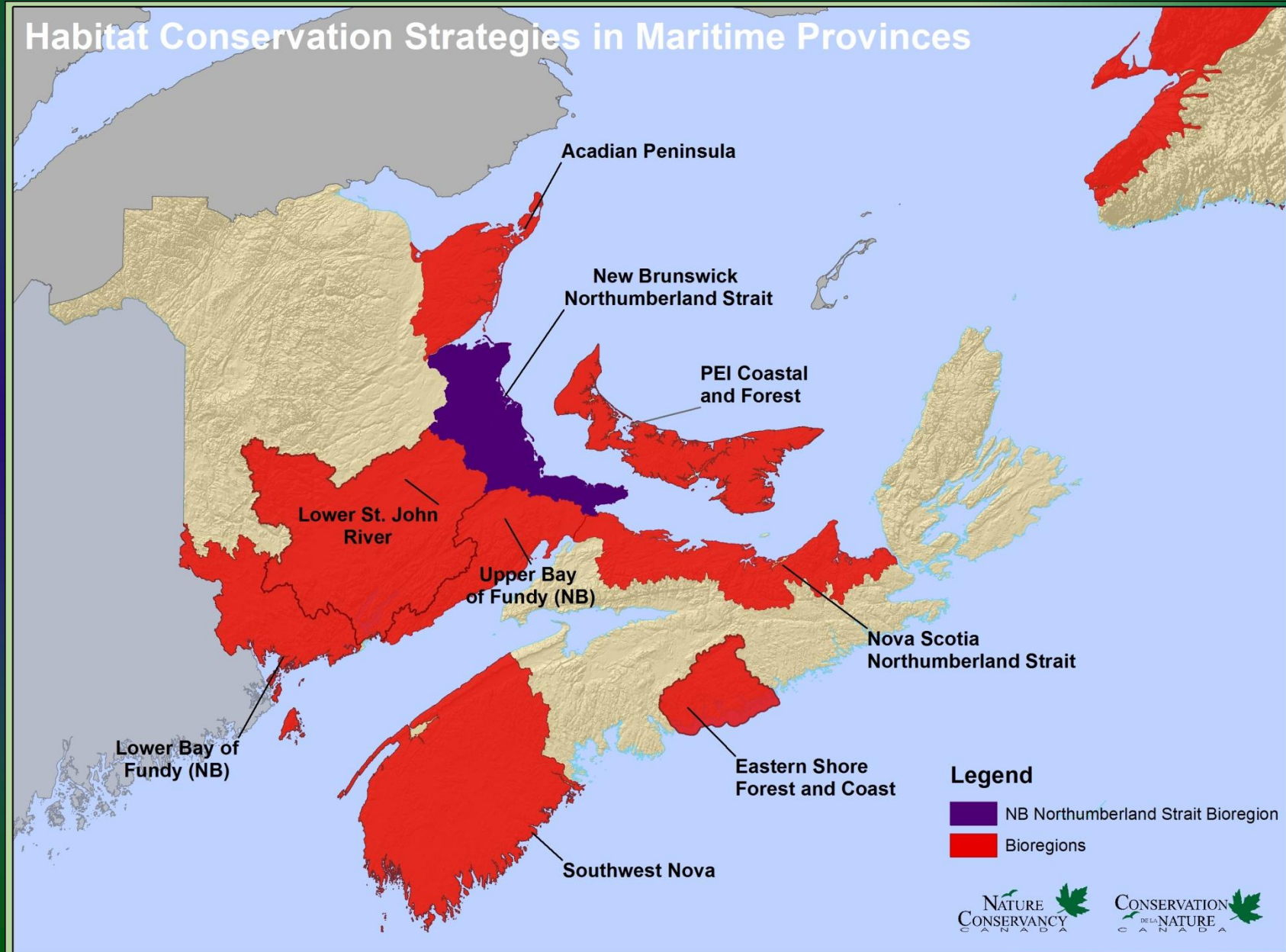
What are Habitat Conservation Strategies?

- Developed in collaboration with partners and collaborators of the Eastern Habitat Joint Venture (EHJV)
- In response to a need to :
 - better coordinate and inform actions of regional conservation organizations
 - highlight opportunities for collaborative conservation actions
 - identify on-the-ground action gaps

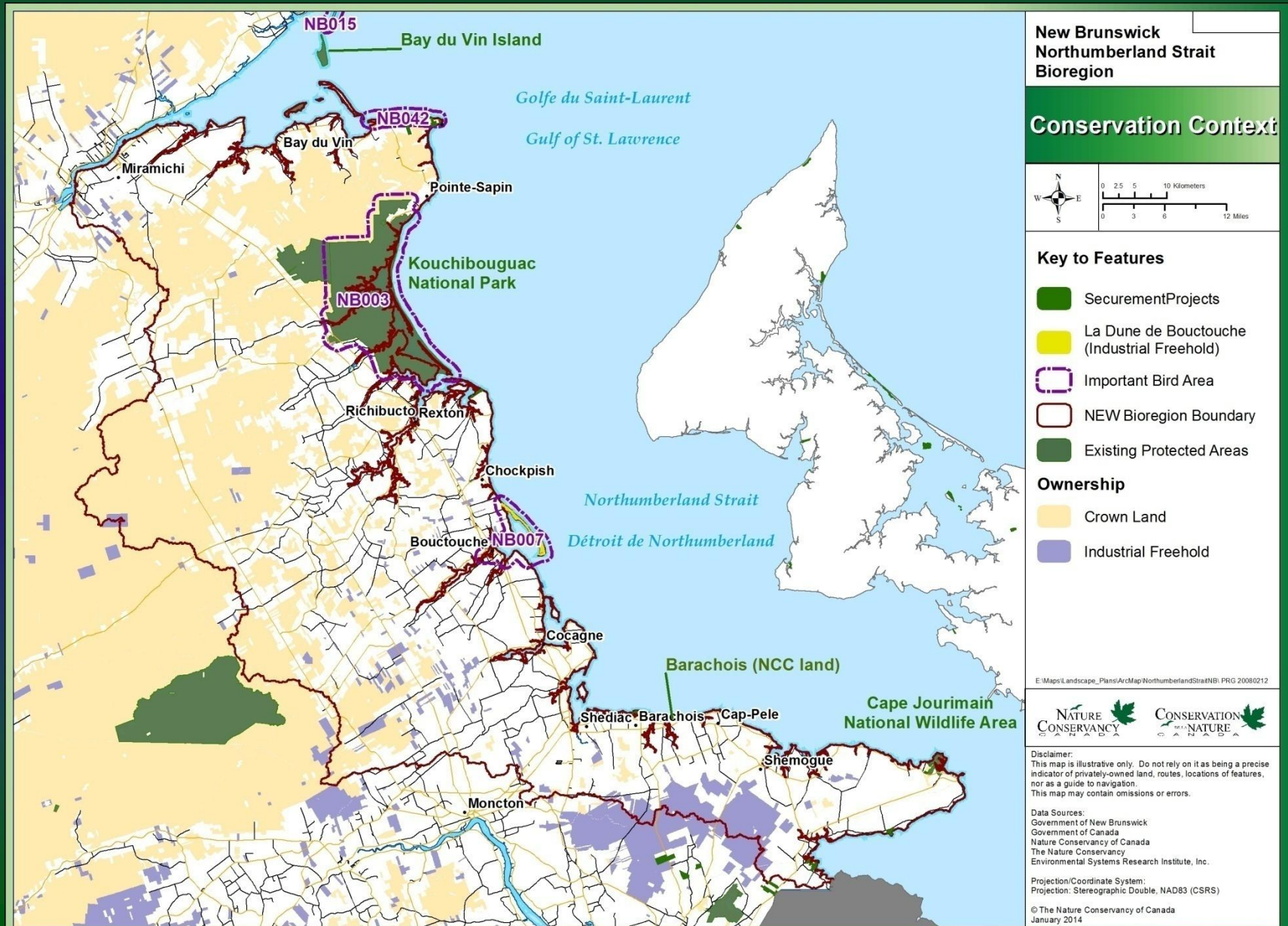
What are Habitat Conservation Strategies?

- Identifies and assesses the current state of species and ecosystems of conservation priority
- Identifies and assesses issues/problems facing ecosystems and significant species in bioregion
- Identifies conservation and stewardship actions of organizations – lead to enhanced partnerships, reduced redundancies, and facilitate decision-making

Habitat Conservation Strategies



Boundary and Conservation Context



Assessment of Ecosystems

Sections - Major Ecosystems

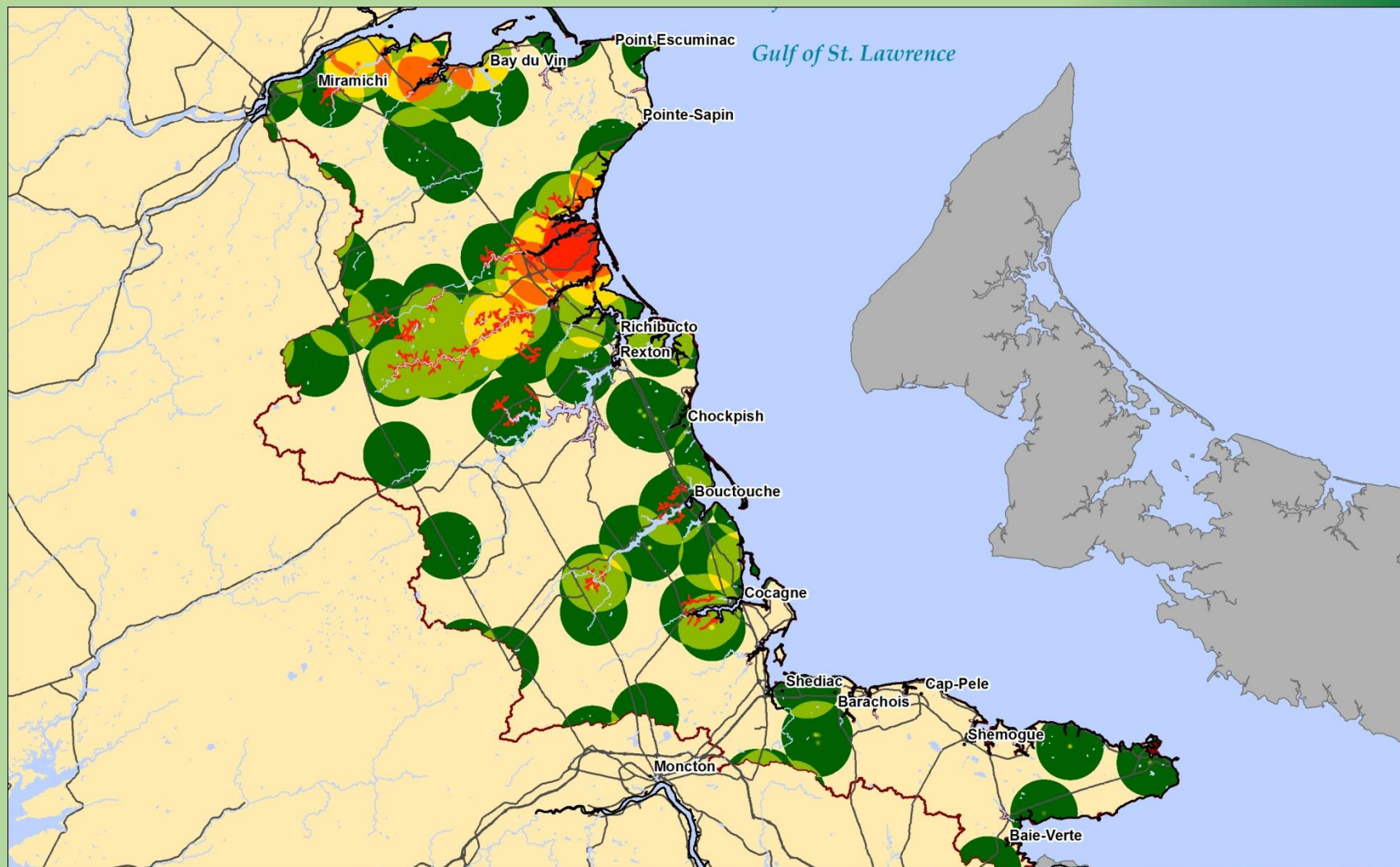
- Consult with partners/experts on species and ecosystems that require conservation in Bioregion
- Assess their viability/ecological integrity
 - **Landscape Context** (landscape surrounding ecosystem)
 - **Condition** (characteristic species, age class structure, invasive sp.)
 - **Size** (population size, patch size)

Landscape Context + Condition + Size = Viability Rank

Summary of Significant Species

- Species at Risk (federal and provincial)
- Bird Conservation Region priority species (colonial, migratory etc.)
- Rare species (less than 20 populations found in the province)
- Endemic/significant species (unique to this bioregion)



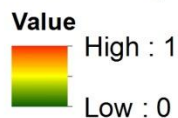


NB Northumberland Strait Bioregion

Non-Bird Species at Risk



Non-Bird Species at Risk

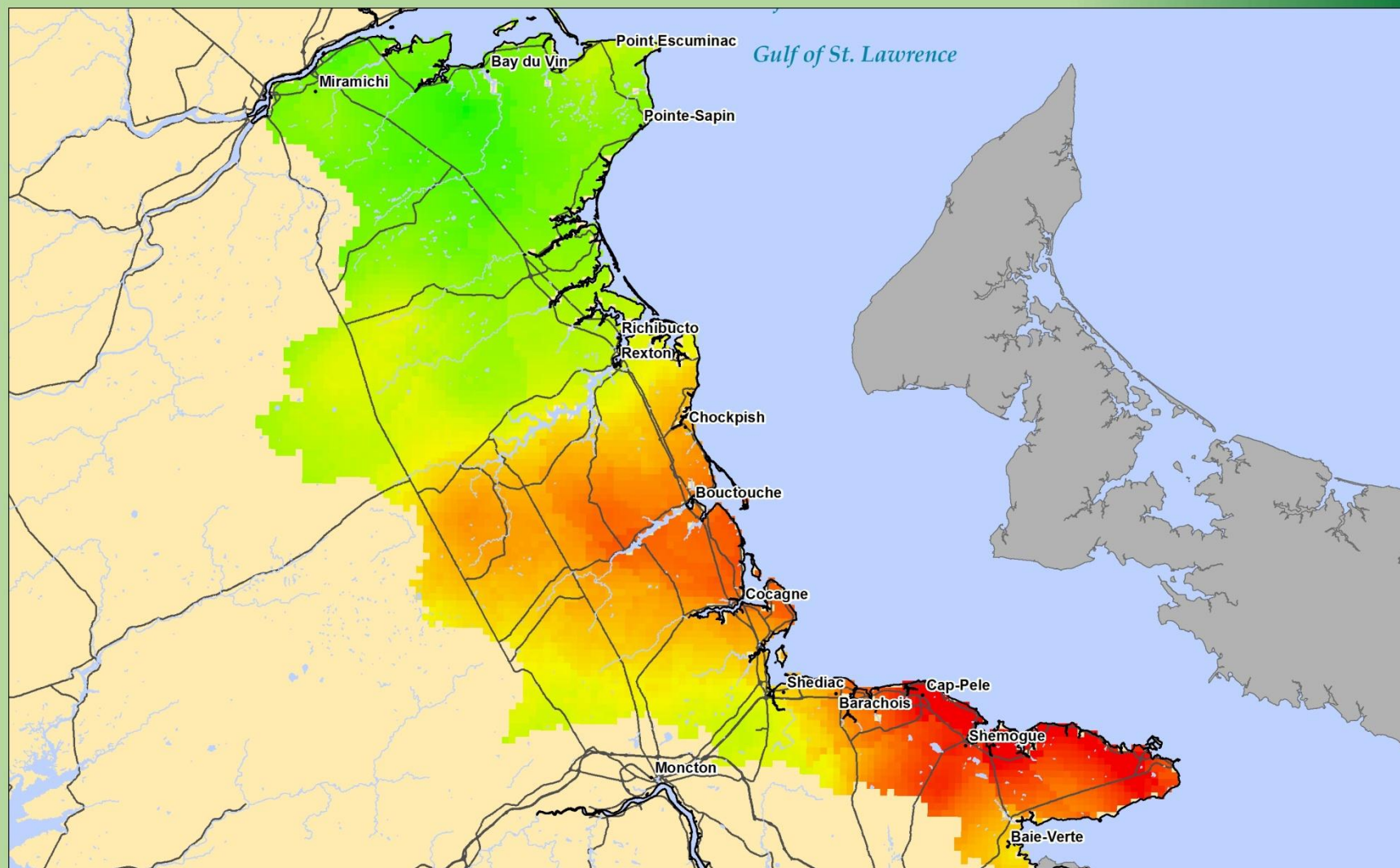


Disclaimer:
This map is illustrative only. Do not rely on it as being a precise indicator of privately-owned land, routes, locations of features, nor as a guide to navigation.
This map may contain omissions or errors.

Data Sources:
Government of New Brunswick
Government of Canada
Nature Conservancy of Canada
The Nature Conservancy
Environmental Systems Research Institute, Inc.

Projection: Stereographic Double, NAD83 (CSRS)

© The Nature Conservancy of Canada
March - 2014



NB Northumberland Strait Bioregion

Relative Bird Abundance



Index Value
High
Low



NATURE
CONSERVANCY
CANADA

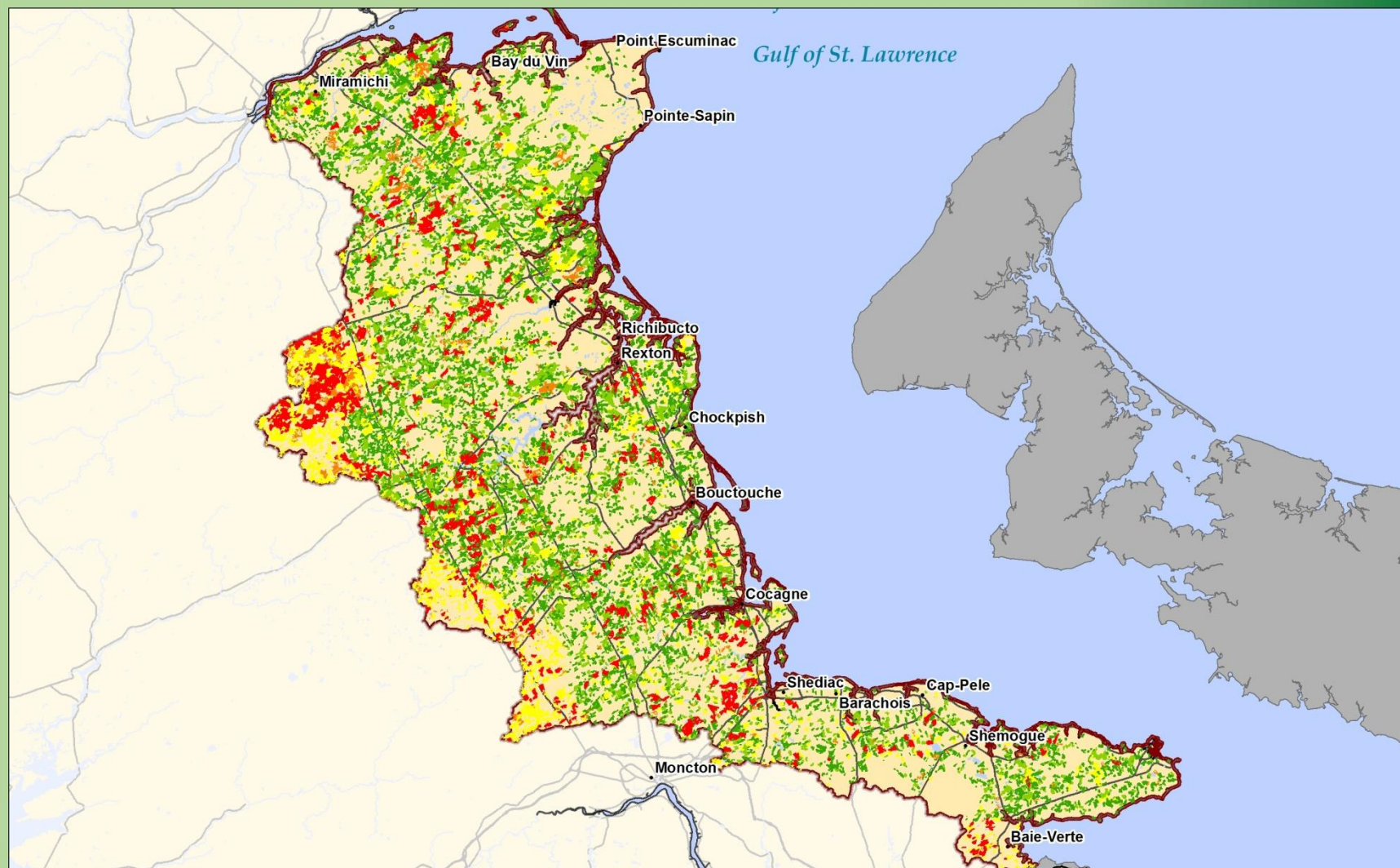


CONSERVATION
THE NATURE
CANADA



Disclaimer:
This map is illustrative only. Do not rely on it as
being a precise indicator
of privately-owned land, routes, locations of features,
nor as a guide
to navigation.
This map may contain
omissions or errors.

Data Sources:
Government of New Brunswick
Government of Canada
Nature Conservancy of Canada
The Nature Conservancy
Environmental Systems Research Institute, Inc.
Projection: Stereographic Double, NAD83 (CSRS)
© The Nature Conservancy of Canada
March - 2014



NB Northumberland Strait Bioregion

Forest Stands



Score



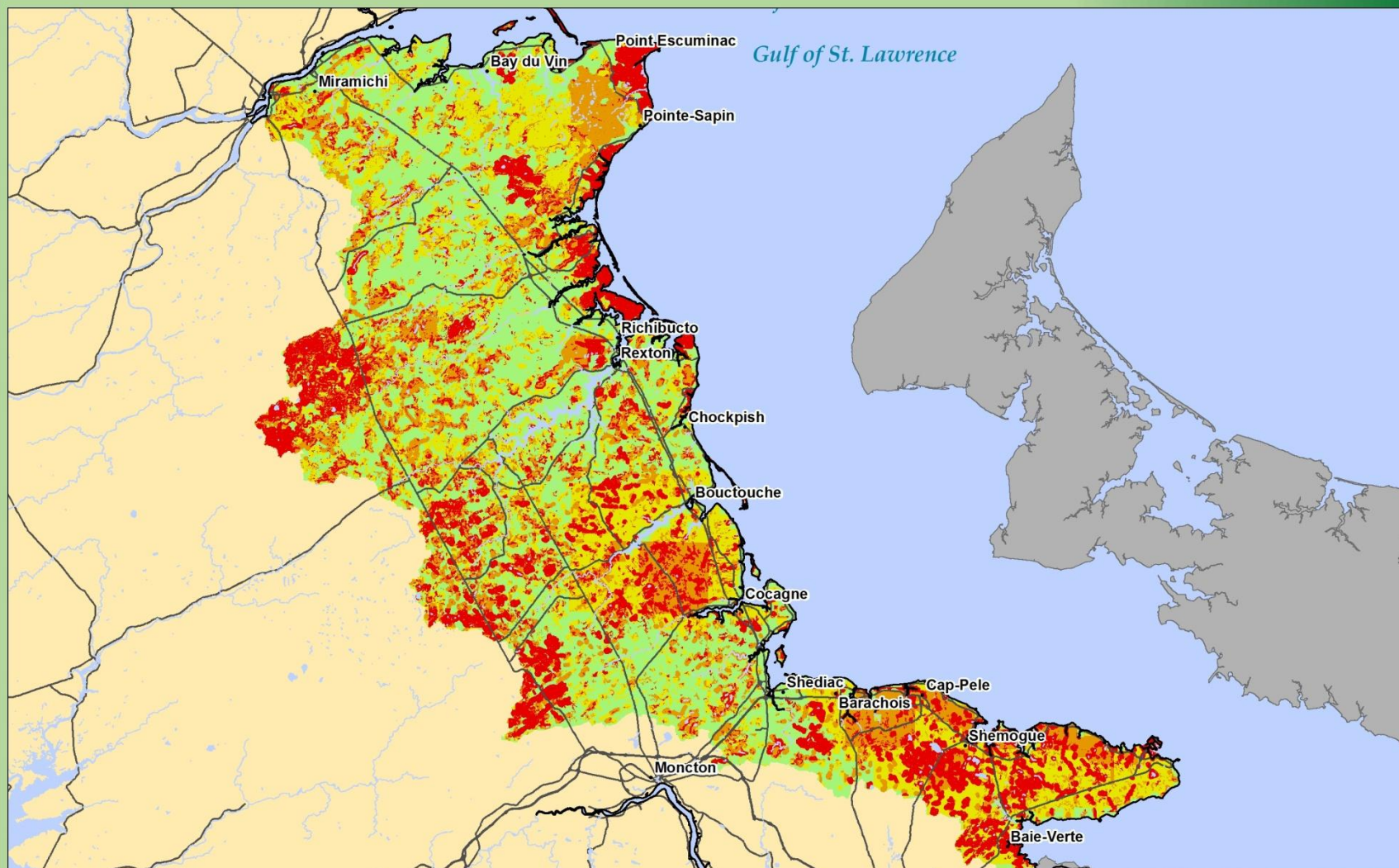
Disclaimer:
This map is illustrative only. Do not rely on it as being a precise indicator of privately-owned land, routes, locations of features, nor as a guide to navigation.
This map may contain omissions or errors.



Data Sources:
Government of New Brunswick
Government of Canada
Nature Conservancy of Canada
The Nature Conservancy
Environmental Systems Research Institute, Inc.

Projection: Stereographic Double, NAD83 (CSRS)

© The Nature Conservancy of Canada
March - 2014

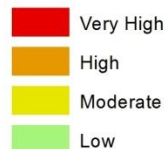


NB Northumberland Strait Bioregion

Conservation Value Index



Conservation Value



Disclaimer:
This map is illustrative only. Do not rely on it as
being a precise indicator
of privately-owned land, routes, locations of features,
nor as a guide
to navigation.
This map may contain
omissions or errors.



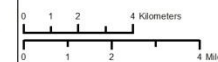
Data Sources:
Government of New Brunswick
Government of Canada
Nature Conservancy of Canada
The Nature Conservancy
Environmental Systems Research Institute, Inc.

Projection: Stereographic Double, NAD83 (CSRS)

© The Nature Conservancy of Canada
March - 2014

**New Brunswick
Northumberland Strait
Bioregion**

Escuminac



Key to Features

Existing Protected Areas

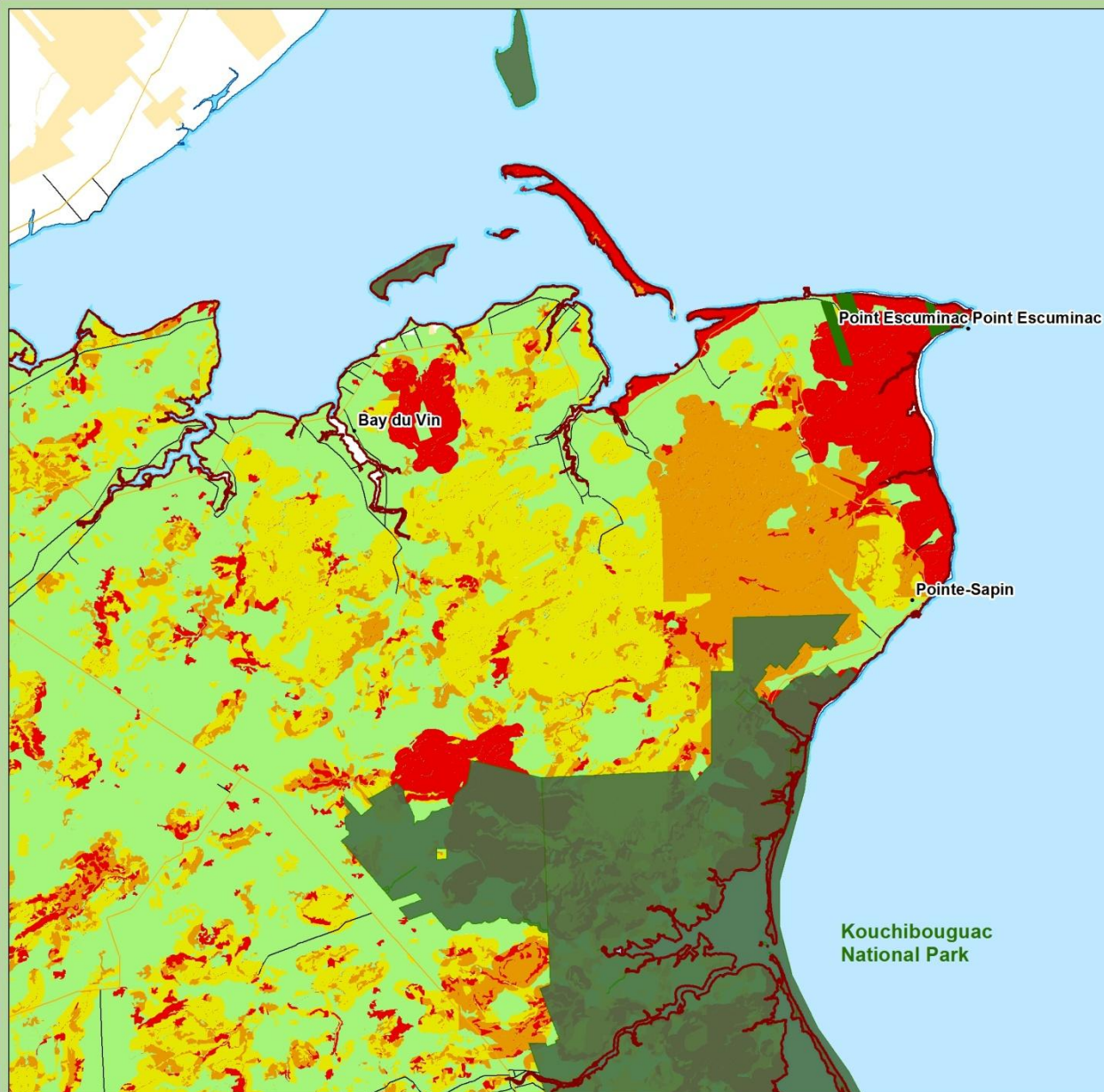
Conservation Value

Very High

High

Moderate

Low



E:\Maps\Landscape_Plans\ArcMap\NorthumberlandStrait\NB PRG 20080212



Disclaimer:
This map is illustrative only. Do not rely on it as being a precise indicator of privately-owned land, routes, locations of features, nor as a guide to navigation.
This map may contain omissions or errors.

Data Sources:
Government of New Brunswick
Government of Canada
Nature Conservancy of Canada
The Nature Conservancy
Environmental Systems Research Institute, Inc.

Projection/Coordinate System:
Projection: Stereographic Double, NAD83 (CSRS)

© The Nature Conservancy of Canada
January 2014

Assessment of Conservation Concerns

Sections of HCS

● THREATS

● Assess magnitude of threats

● Severity

● Scope

● Irreversibility

● Ranks

● **Very High** : The threat is likely to *destroy or eliminate the biodiversity target*

● **High** : The threat is likely to *seriously degrade the biodiversity target*

● **Medium** : The threat is likely to *moderately degrade the biodiversity target*

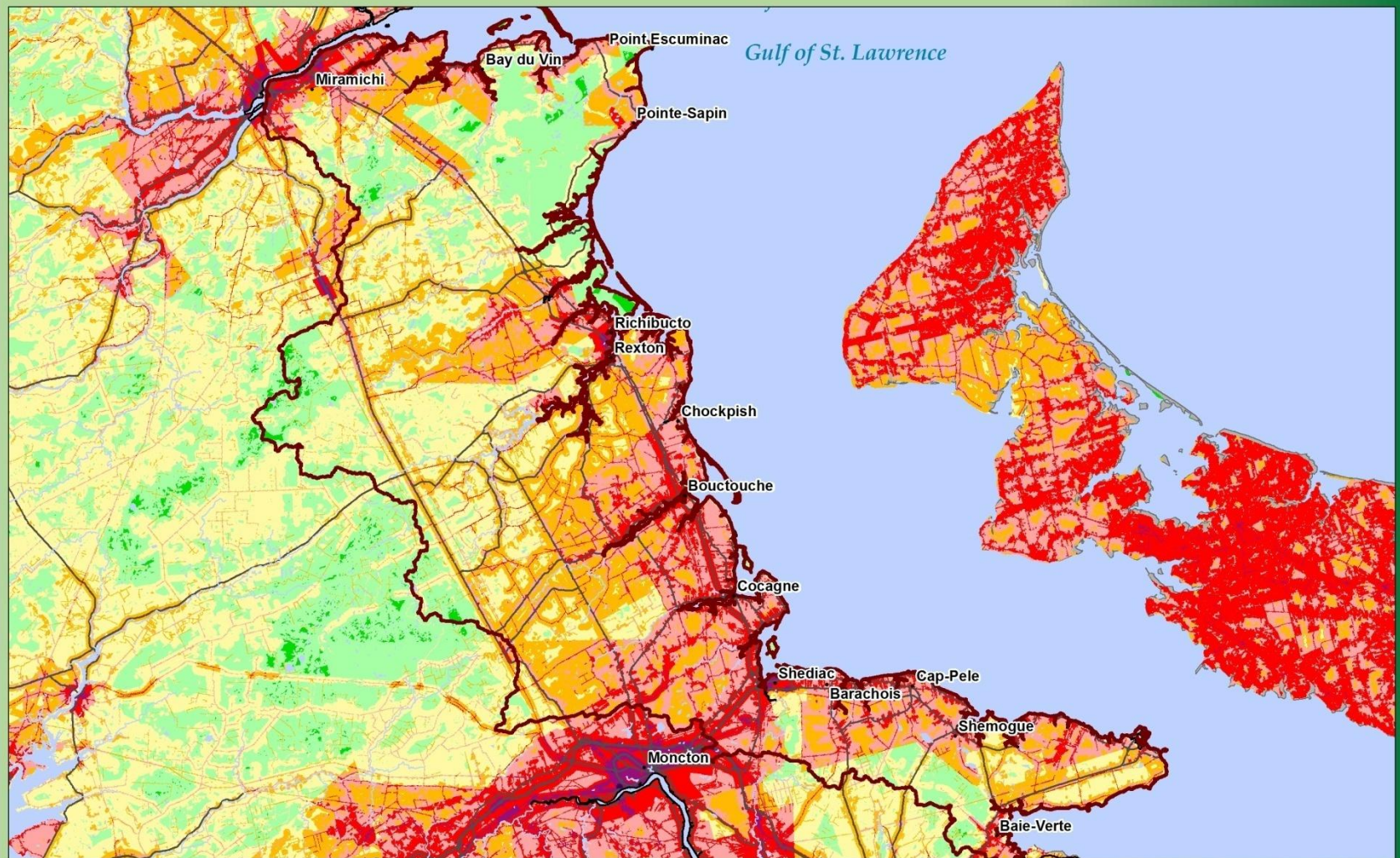
● **Low** : The threat is likely to *only slightly impair the biodiversity target*

Assessment of Conservation Concerns

IUCN Classification of Threats

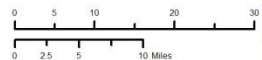
1. Residential and Commercial Development
2. Agriculture and Aquaculture
3. Energy Production and Mining
4. Transportation and Service Corridors
5. Biological Resource Use
6. Human Intrusions and Disturbance
7. Natural System Modifications
8. Invasive and Other Problematic Species and Genes
9. Pollution
10. Geological Events
11. Climate Change & Severe Weather

Conservation Concerns



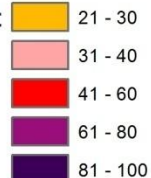
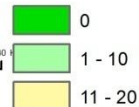
**NB Northumberland
Strait Bioregion**

Human Footprint



Human Footprint

Value



**NATURE
CONSERVANCY
CANADA**

**CONSERVATION
OF NATURE
CANADA**

Disclaimer:
This map is illustrative only. Do not rely on it as
being a precise indicator
of privately-owned land, routes, locations of features,
nor as a guide
to navigation.
This map may contain
omissions or errors.

Data Sources:
Government of New Brunswick
Government of Canada
Nature Conservancy of Canada
The Nature Conservancy
Environmental Systems Research Institute, Inc.
Projection: Stereographic Double, NAD83 (CSRS)
© The Nature Conservancy of Canada
March - 2014

Habitat Conservation Strategies

Sections – Conservation Actions

- Identify conservation actions in different categories by ecosystem type and by organization

1. Securement - Land/Water Protection

NCC\NTNB

e.g. Secure 450 acres priority native/natural lands by 2017 of which at least 400 acres are very high/high priority (NCC/NTNB)

2. Stewardship - Land/Water Management

3. Stewardship - Species Management

4. Communications, Education & Awareness

What can HCSs be used for?

Possibilities

- Landuse planning – identify highly valuable conservation land (e.g. Protected area planning/ avoid certain areas for resource extraction)
- Strategic securement for land trust organizations
- Coordinate activities among organizations with similar mandates
- Identifying information/knowledge gaps – coordinate filling these gaps
- Strategy for climate change effects on ecosystems and infrastructure

Questions?

