

ECHO... Environment, Community, Health, Observatory Network

“Strengthening intersectoral capacity to understand and respond to health impacts of resource development”



CIHR IRSC



Canadian Institutes of Health Research
Instituts de recherche en santé du Canada



{{ECHO}}

Environment, Community,
Health Observatory Network

Strengthening intersectoral
capacity to understand and
respond to health impacts of
resource development



Réseau ECHO Network

The ECHO Network Seeks to:

1. create and operate an Environment, Community, Health Observatory (ECHO) that **strengthens intersectoral capacity** to understand and respond to health impacts of resource development, and
2. use the ECHO platform to help regional programs make critical decisions on **cumulative determinants of health** that cannot be achieved by the health sector alone.

{{ECHO}}

Environment, Community, Health Observatory Network

Strengthening intersectoral
capacity to understand and
respond to health impacts of
resource development



Regional Contexts/Cases

Northern
Health
(Northern
BC)

First Nations
Health
Authority
(BC)

Battle River
Watershed
Alliance (AB)

NB
Environmental
Network
(NB)

Future
Regional
Cases
(in Canada;
other
countries)

{{{ECHO}}}

Environment, Community, Health Observatory Network

Strengthening intersectoral
capacity to understand and
respond to health impacts of
resource development



KNOWLEDGE &
EXPERIENCE
of the
**Cumulative
Impacts
of Resource
Development**
(Local Knowledge;
Secondary Data
(Monitoring/Surveillance);
Primary Research)

Detect, Take Notice, Analyze?
*Making the invisible visible through
integrative approaches to environment,
community & health impacts*



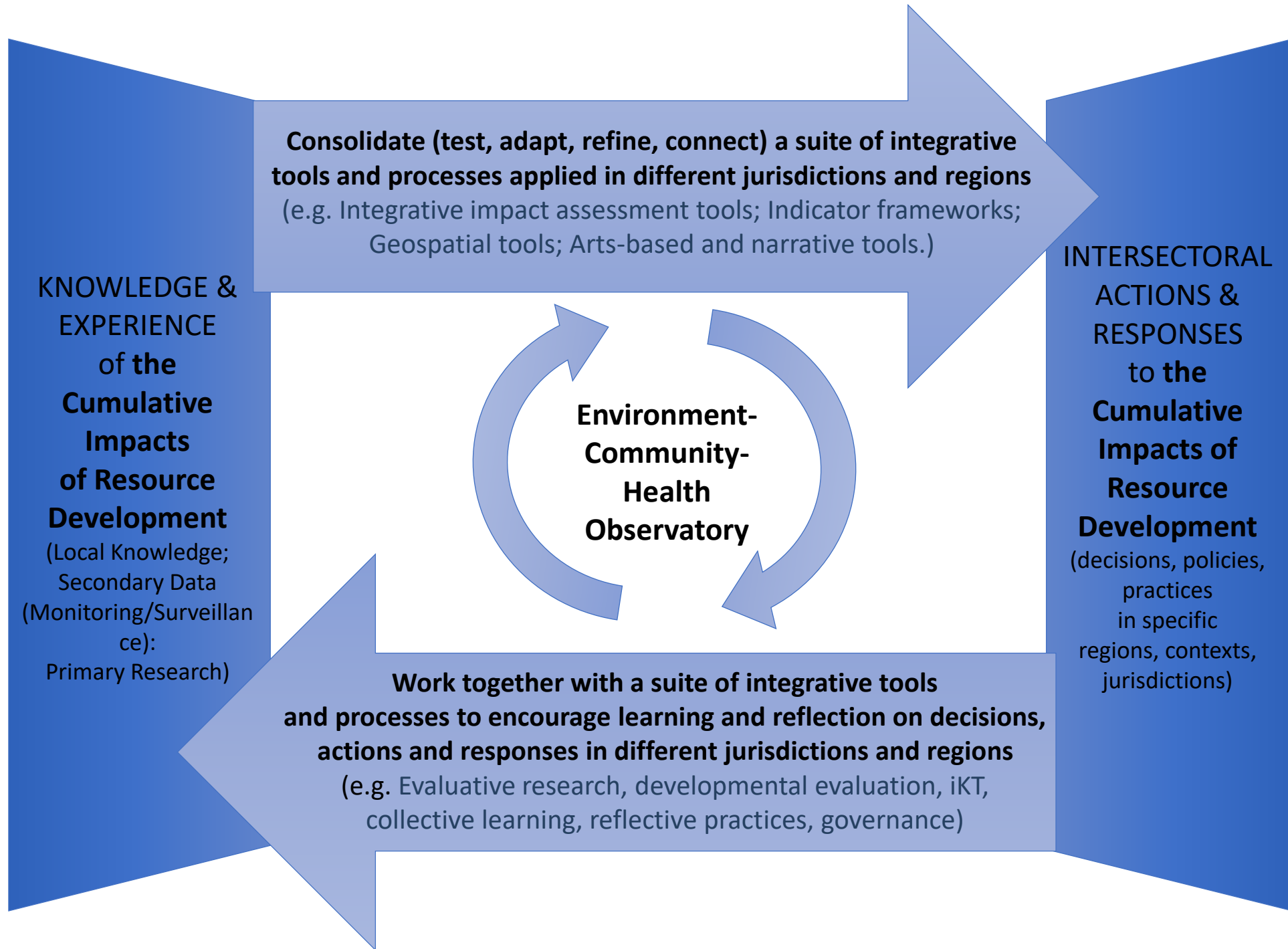
Respond, Evaluate, Learn?
*Learning together in ways that
cannot be achieved by the health
sector alone*

INTERSECTORAL
ACTIONS &
RESPONSES
to the
**Cumulative
Impacts of
Resource
Development**
(decisions, policies,
practices
in specific
regions, contexts,
jurisdictions)

{{{ECHO}}}

Environment, Community, Health Observatory Network

Strengthening intersectoral
capacity to understand and
respond to health impacts of
resource development



{{{ECHO}}}

Environment, Community,
Health Observatory Network
Strengthening intersectoral
capacity to understand and
respond to health impacts of
resource development

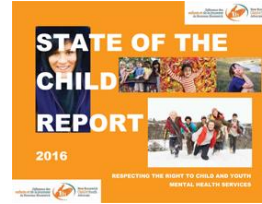


Développement d'outils

Sexe - genre

Équité

Geospatial tools



Indicator
framework



Bassin versant

Perspectives
autochtones

Creative and
narrative tools



{{ECHO}}

**Environment, Community,
Health Observatory Network**
Strengthening intersectoral
capacity to understand and
respond to health impacts of
resource development



Réseau ECHO Network

Launch meeting in Prince George, May 2017



{{ECHO}}

Environment, Community,
Health Observatory Network
Strengthening intersectoral
capacity to understand and
respond to health impacts of
resource development



Réseau ECHO Network

NB Launch meeting in Moncton, June 2017



{{ECHO}}

Environment, Community,
Health Observatory Network

Strengthening intersectoral
capacity to understand and
respond to health impacts of
resource development

Réseau ECHO Network

**2019 – Annual national ECHO meeting in
New Brunswick!!**

Contacts:

- **NB co-leads:** Raissa Marks and Céline Surette,
- **NB regional coordinator:** Ariane Juneau-Godin
ariane.juneau-godin@nben.ca
- Project links /website information will be updated at:
 - <https://ecohealthkta.net/health-resource-development/>

It was the season of light...

Focus sur la santé environnementale des enfants
à travers la lentille de nos bassin versants



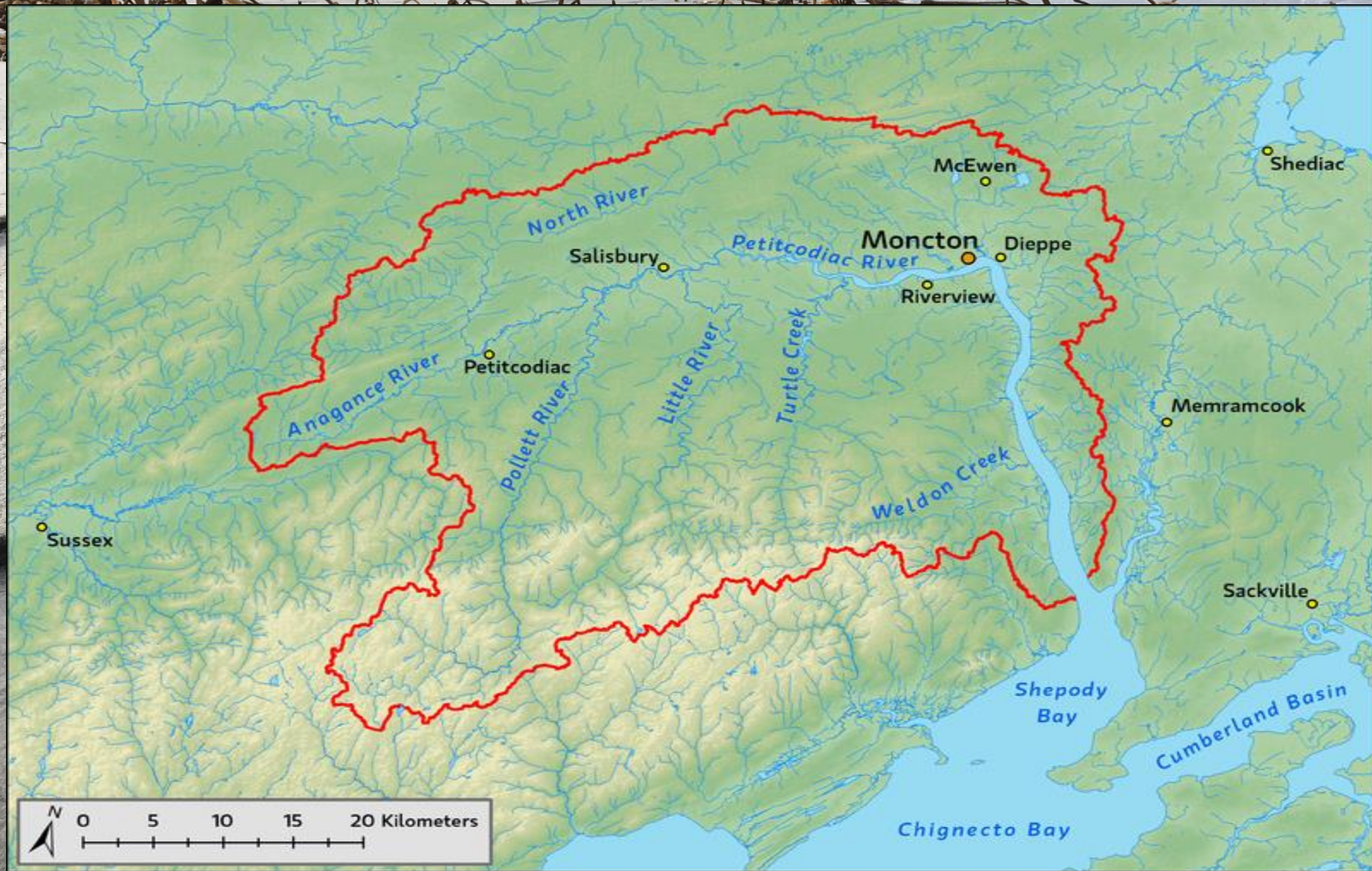
Framing children's environmental health through
the lens of our watersheds



What is a watershed?



Qu'est-ce qu'un
bassin versant?

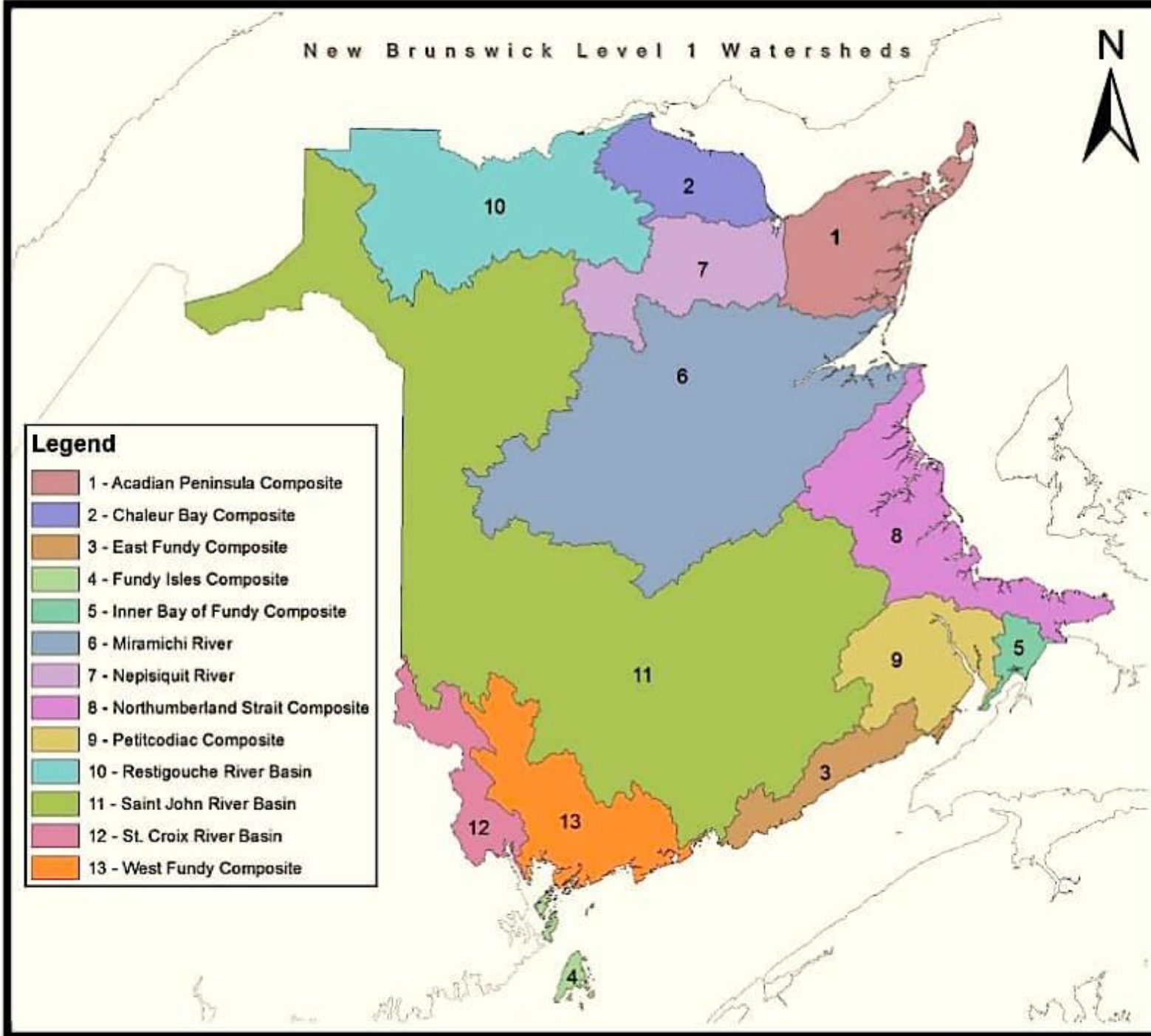


New Brunswick Level 1 Watersheds



Legend

- 1 - Acadian Peninsula Composite
- 2 - Chaleur Bay Composite
- 3 - East Fundy Composite
- 4 - Fundy Isles Composite
- 5 - Inner Bay of Fundy Composite
- 6 - Miramichi River
- 7 - Nepisiquit River
- 8 - Northumberland Strait Composite
- 9 - Petitcodiac Composite
- 10 - Restigouche River Basin
- 11 - Saint John River Basin
- 12 - St. Croix River Basin
- 13 - West Fundy Composite



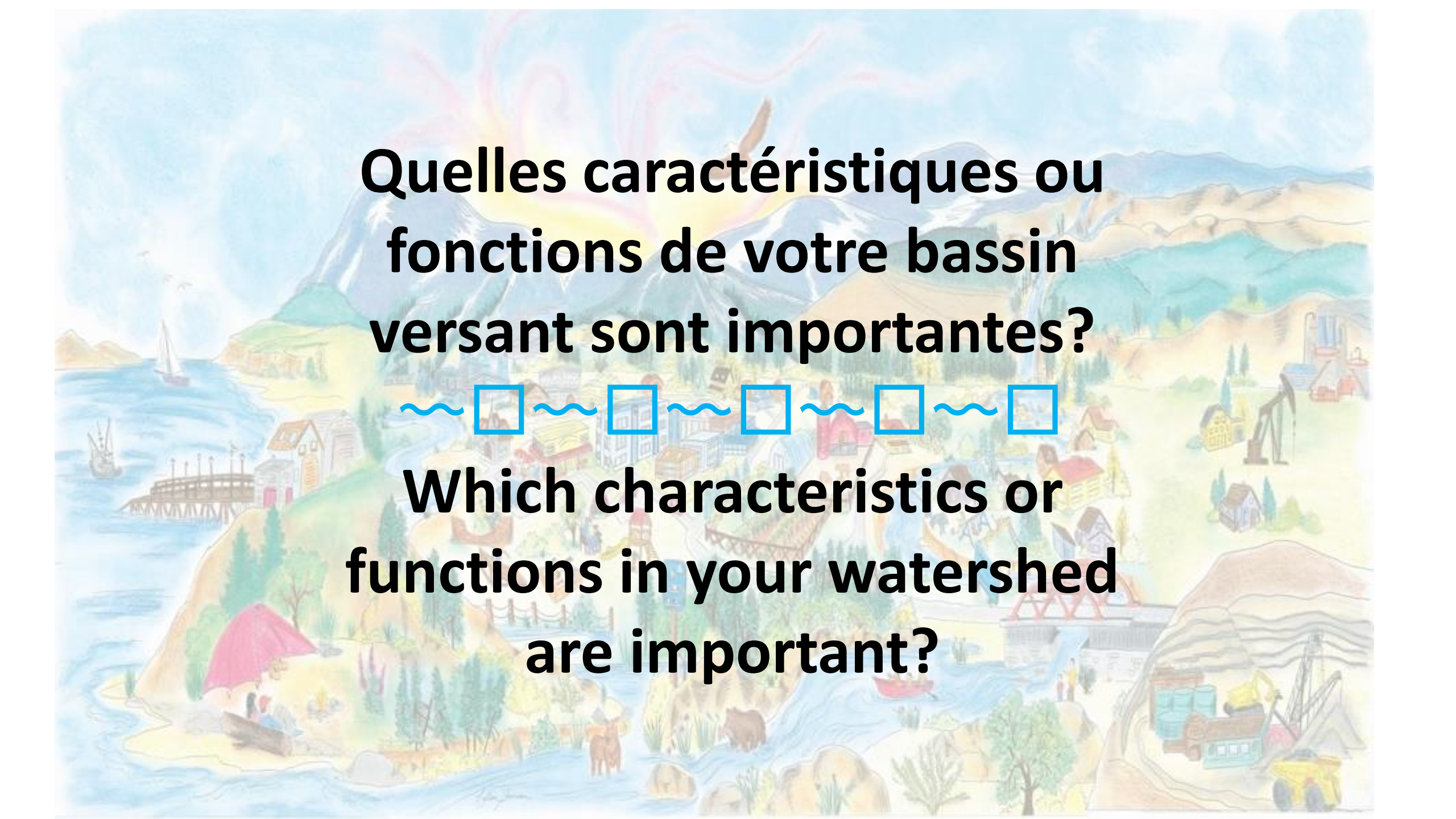


What do you love about your watershed?

~~~~~

**Qu'est-ce que vous aimez de votre bassin versant?**

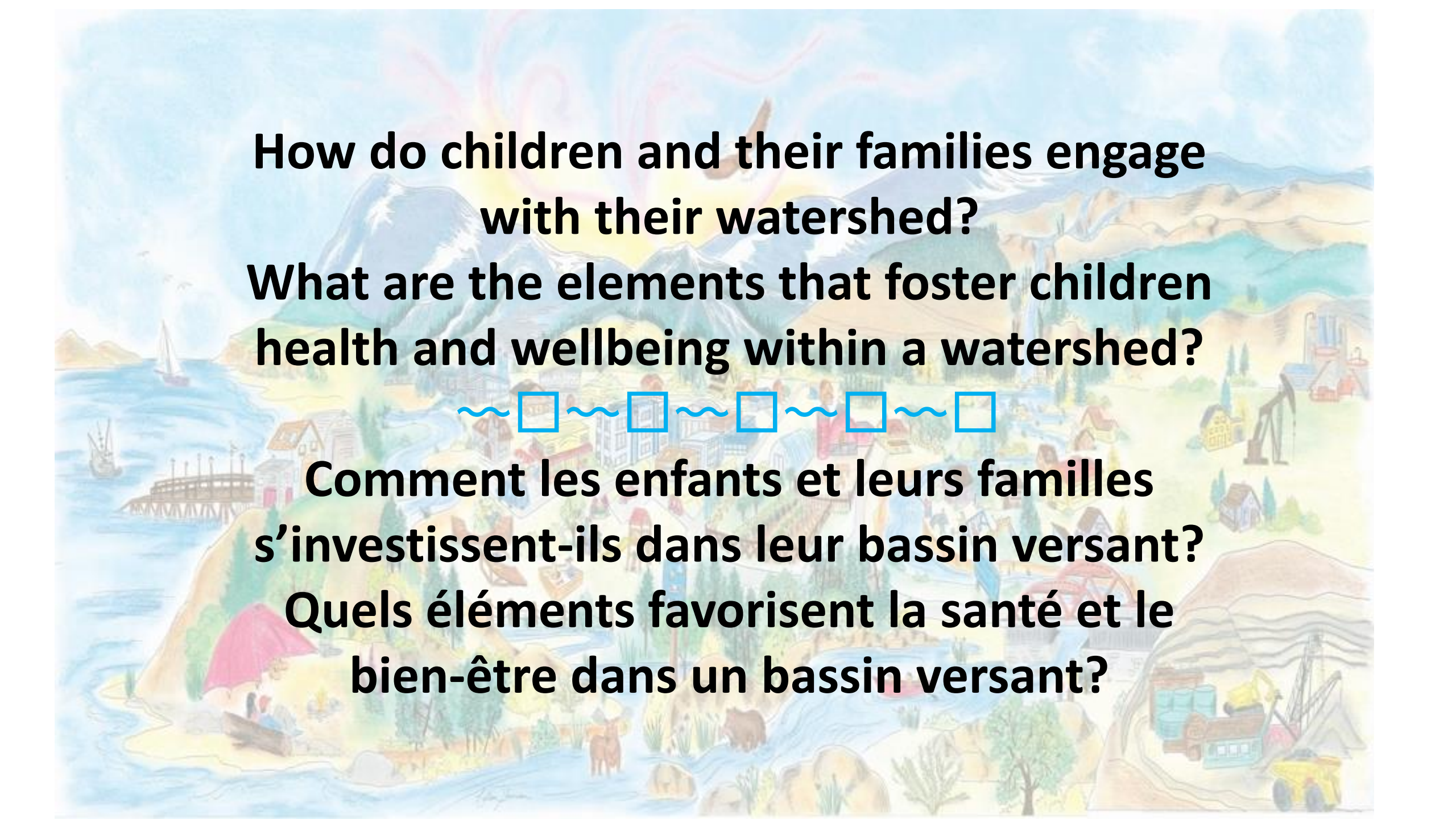




**Quelles caractéristiques ou  
fonctions de votre bassin  
versant sont importantes?**

~~~~~

**Which characteristics or
functions in your watershed
are important?**



**How do children and their families engage
with their watershed?
What are the elements that foster children
health and wellbeing within a watershed?**



**Comment les enfants et leurs familles
s'investissent-ils dans leur bassin versant?
Quels éléments favorisent la santé et le
bien-être dans un bassin versant?**

Révélations?
Liens imprévus qui sont devenus
visibles?



Ah-ha moments?
Unexpected connections that
became visible?





Activité 'Post-it' activity

Add special places, little stories, funny facts on the map!



Ajouter des places spéciales, petites histoires, faits cocasses sur la carte!

It was the age of wisdom...



<https://kahoot.it/>