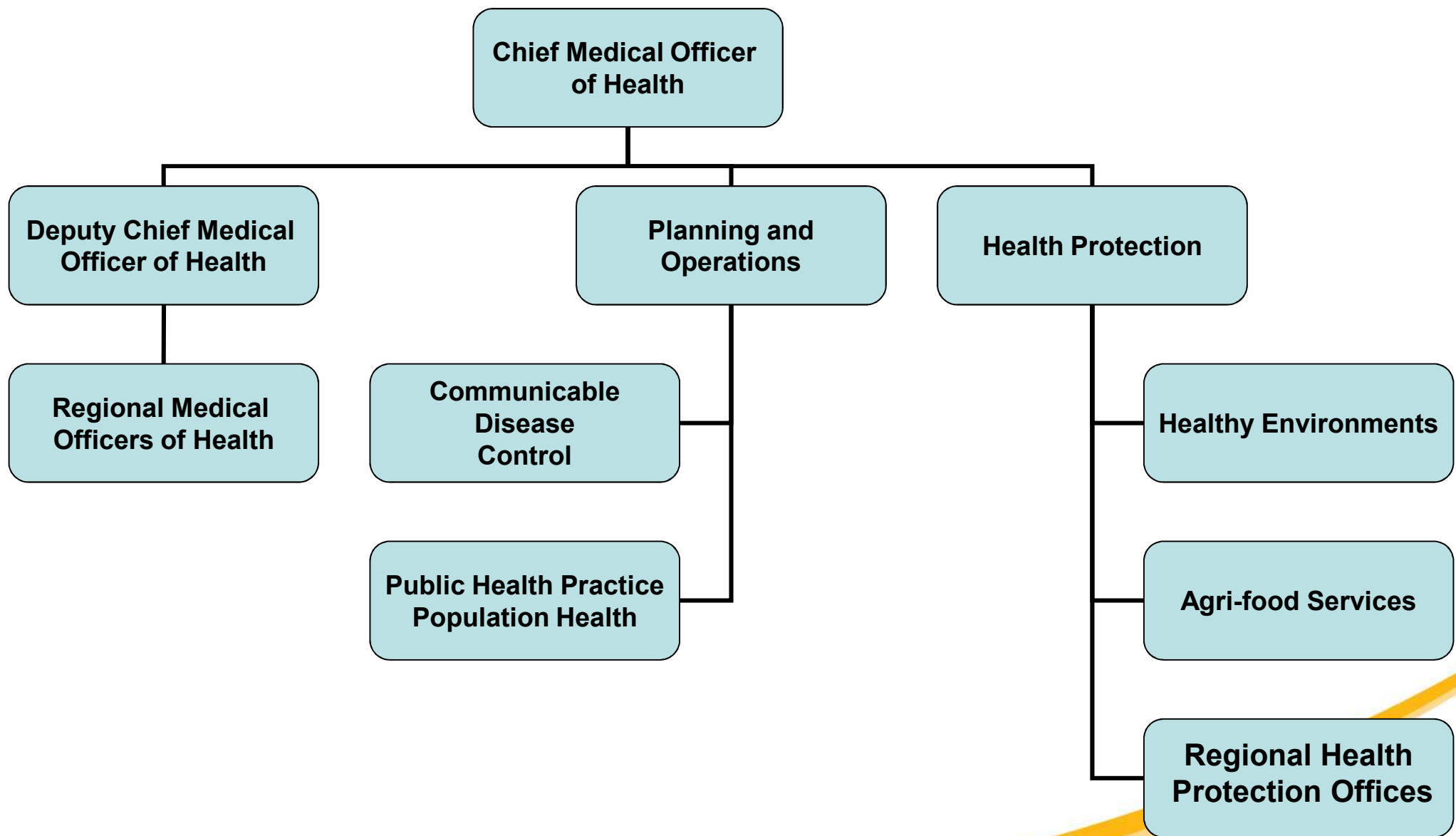


Health Protection Branch and Healthy Environments unit

Presented by

Karen White, MEng, PEng
Director – Healthy Environments

CEHC conference November 17, 2010



The Office of the Chief Medical Officer of Health (OCMOH) Mission Statement

Using a population health approach, its mission is to support healthy growth and development, foster healthy lifestyles, control communicable diseases, and ***protect the public from adverse health consequences of exposure to chemical, physical and biological agents.***

Health Protection Branch

- Oversees programs including: (licensing, inspection, data interpretation, Environmental Impact Assessment reviews, etc...)
 - Food safety (food service establishment)
 - Agrifood services
 - Drinking Water
 - Recreational Water
 - On-site Sewage Disposal
 - Institutional Health
 - Communicable Disease control investigations
 - Smoke Free Places Act
 - Radiological
 - Indoor Air Quality
 - Cemetery Act and Regulations



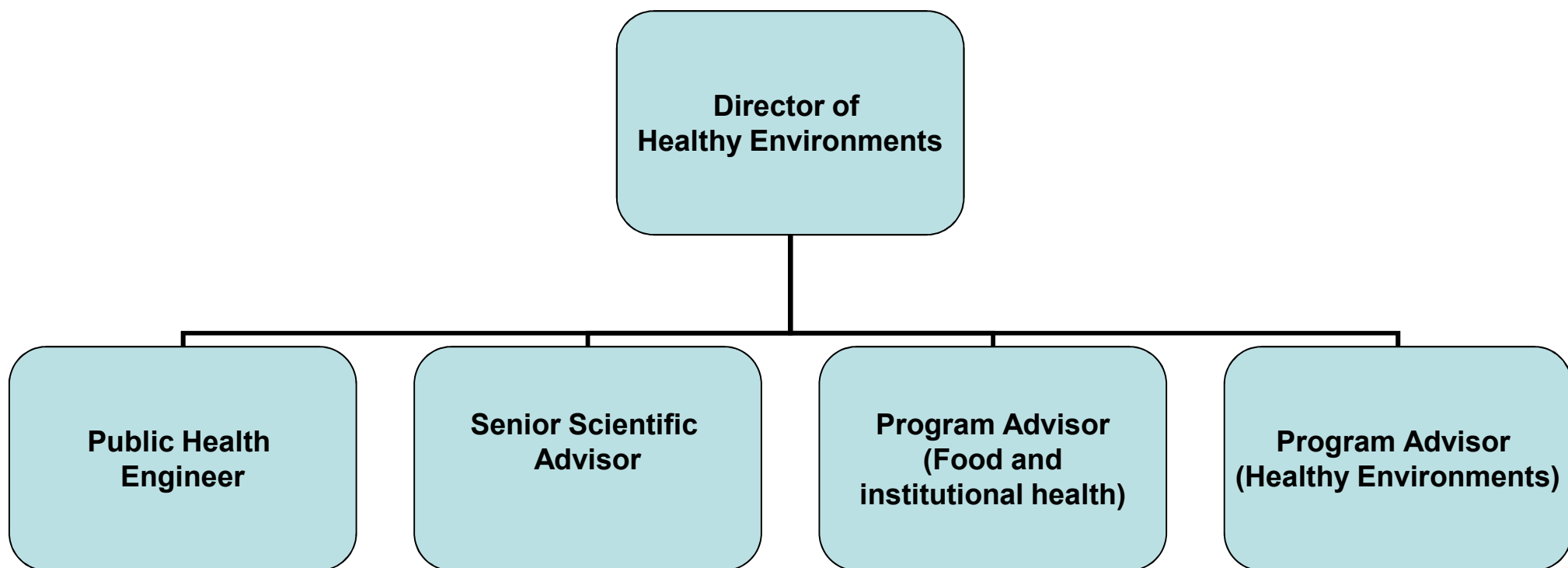
Health Protection Branch programs

- Delivered through the regional offices by Public Health Inspectors and Agrifood Inspectors
- Support for the regions:
 - Regional Medical Officers of Health
 - OCMOH Central Office staff
 - Public Health Nurses
 - Other departmental regional staff (eg: Environment, Education, Natural Resources, etc.)

Role of HPB Central Office Staff

- Technical Expertise
- Program and Policy Development
- Liaison with federal and provincial agencies and departments
- Participate in other department's initiatives affecting public health
- Briefings
- Staff Training
- Special Projects and Initiatives
- Health Risk Assessments and studies

Healthy Environments Unit



Healthy Environments

- Further development of policies and procedures for existing programs
- Better participation in national and provincial initiatives
- More emphasis on environmental programs
- Contribute to common DEnv – DH issues
- **More resources to meet our mandate to protect public health of NBers**

Healthy Environments Workplan

- Strategic Planning in progress
- Development of workplans for Health Protection Branch and Healthy Environments Units
- Move towards a planned, proactive approach to public health programs



What does this unit mean for Children's Environmental Health?

- Healthy Environments unit will bring focus to OCMOH environmental programs
- Environmental Programs aimed at general public and vulnerable populations.
- Children are a vulnerable population for many environmental issues.

How can Children's Environmental Health Collaborative contribute?



- Strategically bring forward tangible issues for consideration by Healthy Environments unit.
 - 1 or 2 most important issues to be addressed?
- Identify areas where partnerships can be created.

